



Licence Number	L9201/2019/1
Licence Holder	Hastie Waste Pty Ltd
ACN	114 505 485
Registered business address	22 Pedretti Road PICTON EAST WA 6229
DWER file Number	DER2017/002090-1
Duration	07/06/2019 to 06/06/2039
Date of issue	07/06/2019
Date of amendment	11 September 2024
Premises details	Hastie Waste Pty Ltd 22 Pedretti Road PICTON EAST, WA 6229 Lot 509 on Plan 59719

Prescribed premises category description (Schedule 1, <i>Environmental Protection Regulations 1987</i>)	Assessed production / design capacity
Category 62: Solid waste depot: premises on which waste is stored or sorted, pending final disposal or re-use.	30,000 tonnes per annual period

This Licence is granted to the Licence Holder, subject to the following conditions by:

A/MANAGER WASTE INDUSTRIES

an officer delegated under section 20 of the *Environmental Protection Act 1986* (WA)

Licence history

Date	Reference number	Summary of changes
7/06/2019	L9201/2019/1	Licence granted
11/09/2024	L9201/2019/1	Licence amendment for the installation of waste sorting machinery within the existing shed on the premises to complement existing waste sorting activities.

Interpretation

In this licence:

- (a) the words 'including', 'includes' and 'include' in conditions mean "including but not limited to", and similar, as appropriate;
- (b) where any word or phrase is given a defined meaning, any other part of speech or other grammatical form of that word or phrase has a corresponding meaning;
- (c) where tables are used in a condition, each row in a table constitutes a separate condition;
- (d) any reference to an Australian or other standard, guideline, or code of practice in this licence:
 - (i) if dated, refers to that particular version; and
 - (ii) if not dated, refers to the latest version and therefore may be subject to change over time;
- (e) unless specified otherwise, any reference to a section of an Act refers to that section of the EP Act; and
- (f) unless specified otherwise, all definitions are in accordance with the EP Act.

NOTE: This licence requires specific conditions to be met but does not provide any implied authorisation for other emissions, discharges, or activities not specified in this licence.

Conditions

The licence holder must ensure that the following conditions are complied with:

Infrastructure and equipment

- The licence holder must ensure that the site infrastructure and equipment listed in Table 1 and located at the corresponding infrastructure location is operated in accordance with the corresponding operational requirement set out in Table 1.

Table 1: Infrastructure and equipment requirements

	Site infrastructure and equipment	Operational requirement	Infrastructure location
1.	Storage bunker (10 m x 39.6 m reinforced concrete floor x 3.0 m high concrete tilt walls)	a) Storage bunker is to be maintained in good condition, free of cracks and defects.	Shown as "Concrete Bunker" in Schedule 1, Figure 3
2.	Sorting shed	a) Sorting shed is to be maintained in good condition, free of damage. b) All infrastructure and equipment within the sorting shed is to be maintained in good working order.	As shown in Schedule 1, Figure 3
3.	Compacted aggregated pavement within Waste Depot yard (outside Storage Bunker and buildings)	a) Maintained in good condition.	As shown in Schedule 1, Figure 2
4.	Water spray system	a) Maintained in good working order to ensure that all roadways and waste stockpiles remain in a damp state at all operating times to prevent dust lift off. Targeted wetting must occur when material handling such as reclaiming from the stockpiles has the potential to generate fugitive dust.	As shown in Schedule 1, Figure 9 (Dust suppression sprinkler outlets)
5.	Designated Quarantine Storage Container	a) Must be signed and marked Designated Quarantine Storage Container; and b) Must be setback a minimum of 5 m from stockpiles of combustible wastes or other containers used for the storage of combustible wastes. c) The setback distance to other containers used to store combustible wastes may be reduced to 3 m where: i) waste storage in the Designated Quarantine Storage Container does not exceed the height of the container; and ii) waste storage in other combustible waste storage containers does not exceed the height of the container in which it is contained.	As shown in Schedule 1, Figure 3

	Site infrastructure and equipment	Operational requirement	Infrastructure location
		d) Must have at least 6 m of unobstructed access down one side for firefighting purposes.	
6.	Feeder Conveyor 2.2 kW	a) Maintained in good working order. b) Conveyors must be run at a speed that moves the material in a gentle manageable stream that reduces movement of waste and generation of dust	Within the existing shed on the premises, labelled as "Sorting shed" in Figure 3.
7.	Trommel 15 kW		
8.	Picking Conveyor 1.5 kW		
9.	Magnet 2.2 kW		
10.	Density Separator Drum 1.5 kW		
11.	Density Blower 11 kW		
12.	Density Separator Feed Conveyor 1.5 kW		
13.	Heavies Discharge Conveyor 2.2 kW		
Fire safety			
14.	Fire hydrants	a) Must be readily accessible, clearly signposted, and in good condition. b) Portable fire extinguishers must be fully charged.	Located in accordance with Figure 4.
15.	Fire hose reels		
16.	Portable fire extinguishers		
17.	Drain covers/mats	a) Must be able to be effectively deployed over any open drain to prevent discharge of fire-fighting wash-water or spills of environmentally hazardous materials to the drainage network. b) Must be readily available near any open drains.	

Waste acceptance

2. The licence holder must only accept onto the premises waste of a type that:
- (a) does not exceed the rate at which that waste is received; and
 - (b) meets the relevant specification, as set out in Table 2.

Table 2: Waste acceptance criteria

Waste Type	Quantity Limit	Acceptance specification ¹
Inert Waste Type 1	Combined total of 30,000 tonnes per annual period	May be accepted: (a) Construction and demolition (C&D) waste comprising bricks, concrete, and associated unavoidable small quantities of paper, plastics, glass, metal, and untreated timber resulting from: iii) the demolition, erection, construction, refurbishment or alteration of buildings; or iv) the construction, repair or alteration of infrastructure-type developments such as roads, bridges, dams, tunnels, railways and airports. (b) Raw excavated natural material such as clay, gravel, sand, soil, or rock fines. (c) Rocks/soils arising from the excavation of a site (excluding contaminated soils) which has been previously developed or used. (d) Asphalt waste. May not be accepted: (e) Waste containing any visible asbestos or ACM.
Scrap metal (ferrous and non-ferrous)		None specified.
Inert Waste Type 2		Limited to: (a) Plastics; and (b) Tyres (no more than 99 permitted on the premises at any one time)
Putrescible waste		Excludes highly odorous wastes such as: (a) Biosolids. (b) Sewage treatment plant grits and screenings. (c) Animal manures and carcasses.
E-waste		(a) Unavoidable small quantities mixed with other wastes received at the premises.

Note 1: Additional requirements for the acceptance of controlled waste (including asbestos and tyres) are set out in the Environmental Protection (Controlled Waste) Regulations 2004.

Gatehouse inspection

3. Prior to acceptance of waste onto the premises, the licence holder must visually inspect all loads of waste at the gatehouse to determine that the waste meets the waste acceptance requirements set out in condition 2.

Non-conforming waste

4. During pre-inspection of waste loads at the gatehouse, where waste does not meet the waste acceptance requirements set out in condition 2, the licence holder must:
- (a) record the details of the:
 - (i) waste (type, description and volume);
 - (ii) source of the waste load;
 - (iii) name of the waste carrier;
 - (iv) registration number of the delivery vehicle; and
 - (v) date that the waste load was rejected,
- and
- (b) reject the waste and have it removed from the premises by the waste supplier's delivery vehicle;
- or
- (c) where the waste supplier cannot immediately remove the waste in the delivery vehicle, it is stored in the Designated Quarantine Storage Container and removed to an appropriately authorised facility within 14 days of receipt.

Waste processing and operations

5. The licence holder must ensure that the waste types specified in Table 3 are only subjected to the corresponding processes, subject to the corresponding process limits and/or specifications.

Table 3: Waste processing limits and specifications

Waste Type	Processes	Process limits and/or specifications ¹
Inert Waste Type 1	Acceptance, handling, and sorting	(a) Sorting of waste is only to occur on the Concrete Bunker floor shown in Figure 3 using an excavator and sorting grab and/or in the Sorting Shed shown in Figure 3. (b) Material will be wet down prior to and during loading into the feeder conveyor installed in accordance with condition 23. (c) Fine mist sprayers will be used to wet the waste when required to reduce dust. (d) The fall for material into collection bins must be softened to reduce noise. (e) Each waste load is to be inspected for the presence of asbestos or ACM at all stages of the sorting process. (f) If asbestos or ACM is identified or suspected at any stage of the sorting process, it must be managed in accordance with condition 11. (g) Odorous putrescible material must be isolated, stored in an impermeable lidded container, and removed to an appropriately authorised facility for disposal within 24 hours of receipt at the premises.
Inert Waste Type 2		
Scrap metal (ferrous and non-ferrous)		
Putrescible waste		
E-waste		

Waste Type	Processes	Process limits and/or specifications ¹
Inert Waste Type 1	Temporary storage of sorted waste prior to removal off-site	(a) Must be stored at the corresponding location for each sorted waste material as shown in Figure 3.
Inert Waste Type 2		
Scrap metal (ferrous and non-ferrous)		
Putrescible waste		(b) No more than the corresponding volume specified in Figure 3 for each waste material is to be stored at any one time.
E-waste		
Residual waste		(c) E-waste is to be stored in a hook-lift bin and is to be covered to protect it from the weather.
Non-conforming waste		(a) All non-conforming waste, apart from asbestos or ACM, must be stored in the Designated Quarantine Storage Container shown as location 15 in Figure 3.
	(b) Asbestos and ACM are to be stored at location 12 shown in Figure 3.	
	(c) Asbestos and ACM must be contained in a manner that prevents the emission of asbestos fibres and be clearly labelled.	

Emissions and discharges

6. The licence holder must immediately recover, or remove and dispose of, spills of environmentally hazardous materials including fuel, oil, or other hydrocarbons, whether inside or outside an engineered containment system.
7. The licence holder must ensure that all material used for the recovery, removal, and/or disposal of environmentally hazardous materials is stored in an impermeable container prior to disposal at an appropriately authorised facility.

Dust management

8. The licence holder must ensure that:
 - (a) all waste stockpiles; and
 - (b) all unsealed access roads
 are maintained in a damp state at all times during operation.
9. The licence holder must ensure that all products to be removed from the premises are wetted down prior to loading.
10. All vehicles must operate at speeds of less than 8 km/h throughout the premises.

Asbestos management

11. If Asbestos and/or ACM is identified during screening operations, the following process is required to be undertaken:
 - (a) The entire waste load is to be isolated and kept wet.
 - (b) If the asbestos or ACM material can be easily removed by hand, it must be:
 - (i) removed from the load;
 - (ii) contained in a manner that prevents the emission of asbestos fibres; and

- (iii) temporarily stored in location 12 shown in Schedule 1, Figure 3, prior to being disposed of to an appropriately licensed facility.
 - (c) Once all suspected or identified asbestos or ACM material has been removed from the waste load, the remaining waste may undergo further sorting.
 - (d) If the identified or suspected asbestos or ACM material cannot be easily removed by hand, the entire waste load must be rejected.
 - (e) Rejected loads must be:
 - (i) isolated;
 - (ii) kept wet;
 - (iii) contained in a manner that prevents the emission of asbestos fibres; and meets the requirements under Part 3, Division 6 of the *Environmental Protection (Controlled Waste) Regulations 2004*.
 - (iv) disposed of to an appropriately authorised facility.
12. The licence holder must maintain a clearly visible sign specifying “no **Asbestos**” at the entry to the premises.

Stockpile management

13. The licence holder must ensure that the height of any stockpile does not exceed the height of the storage bunker walls at all times.
14. Stockpiling of materials must only occur in the Stockpile Areas as depicted in Schedule 1, Figure 3.

Fire controls

15. The licence holder must actively manage the risk of fire and fire hazards at the premises. Minimum management controls include:
- (a) maintaining an emergency response plan with respect to fire, in accordance with AS 3745;
 - (b) limiting the size of stockpiles of waste materials that could cause a fire hazard to the volume specified in Figure 3;
 - (c) maintaining at least two 30 m long, 20 mm fire hose reels and one powder ABE fire extinguisher onsite in good working order;
 - (d) maintaining a mobile fire-fighting unit of at least 600-litre capacity onsite in good working order and able to be engaged immediately at any time;
 - (e) ensuring that fire-fighting wash-water and other waste that may result from firefighting activities on the premises is captured and contained within the premises; and
 - (f) ensuring that any contained fire-fighting wash-water is removed from the premises by a carrier licensed under the Controlled Waste Regulations.

Noise management

16. The premises must only operate between the hours of 07:00 to 19:00 Monday to Saturday, not including public holidays.

Monitoring

Waste input and output monitoring

17. The licence holder must record the total amount of waste accepted onto and removed from the premises, for each waste type listed in Table 4, in the corresponding unit, and for each corresponding time period, as set out in Table 4.

Table 4: Waste accepted onto and removed from the premises

Waste type	Unit	Time period
Wastes accepted at the premises in accordance with Table 2	Tonnes as measured by certified load scales OR m ³ and calculated tonnes – a relevant conversion factor must be used to calculate tonnage	Each load arriving at the premises
Waste types as defined in the Landfill Definitions	Tonnes as measured by certified load scales OR m ³ and calculated tonnes – a relevant conversion factor must be used to calculate tonnage	Each load leaving the premises

Records and reporting

18. The licence holder must record the following information in relation to complaints received by the licence holder (whether received directly from a complainant or forwarded to them by the Department or another party) about any alleged emissions from the premises:
- the name and contact details of the complainant, (if provided);
 - the time and date of the complaint;
 - the complete details of the complaint and any other concerns or other issues raised; and
 - the complete details and dates of any action taken by the licence holder to investigate or respond to any complaint.
19. The licence holder must:
- undertake an audit of their compliance with the conditions of this licence during the preceding annual period; and
 - prepare and submit to the CEO an Annual Audit Compliance Report in the approved form by no later than 31 July each year.
20. The licence holder must maintain accurate and auditable books including the following records, information, reports, and data required by this licence:
- the calculation of fees payable in respect of this licence;
 - the works conducted in accordance with condition 23 of this licence;
 - any maintenance of infrastructure that is performed in the course of complying with condition 1 of this licence;
 - monitoring programs undertaken in accordance with condition 17 of this licence; and

- (e) complaints received under condition 18 of this licence.
21. The books specified under condition 20 must:
- (a) be legible;
 - (b) if amended, be amended in such a way that the original version(s) and any subsequent amendments remain legible and are capable of retrieval;
 - (c) be retained by the licence holder for the duration of the licence; and
 - (d) be available to be produced to an inspector or the CEO as required.
22. The licence holder must comply with a Department Request, within 14 days from the date of the Department Request or such other period as agreed to by the Inspector or the CEO.

Specified works

23. The licence holder must ensure that the proposed works specified in Table 5 are undertaken in accordance with the corresponding design and construction/installation specifications and at the corresponding equipment/infrastructure location in Table 5.

Table 5: Work specifications

	Infrastructure/ equipment	Design and construction/installation specifications	Infrastructure location
1.	Feeder Conveyor 2.2 kW	a) Must be designed and constructed in accordance with the design drawings provided in Schedule 1, Figures 5, 6, 7 and 8.	Within the existing shed on the premises, labelled as "Sorting shed" in Figure 3.
2.	Trommel 15 kW		
3.	Picking Conveyor 1.5 kW		
4.	Magnet 2.2 kW		
5.	Density Separator Drum 1.5 kW		
6.	Density Blower 11 kW		
7.	Density Separator Feed Conveyor 1.5 kW		
8.	Heavies Discharge Conveyor 2.2 kW		

Dust management

- 24.** The licence holder must take all reasonable and practicable measures to ensure that dust generated from the works pursuant to condition 23 is prevented from crossing the boundary of the premises.

Compliance reporting

- 25.** The licence holder must within 30 calendar days of an item of infrastructure or equipment required by condition 23 being constructed and/or installed:
- (d) undertake an audit of their compliance with the requirements of condition 23; and
 - (e) prepare and submit to the CEO an Environmental Compliance Report on that compliance.
- 26.** The Environmental Compliance Report required by condition 25, must include as a minimum the following:
- (f) certification by a suitably qualified engineer that the items of infrastructure and equipment or component(s) thereof, as specified in condition 23, have been constructed in accordance with the relevant requirements specified in condition 23;
 - (g) as constructed plans and a detailed site plan for each item of infrastructure or component of infrastructure specified in condition 23; and
 - (h) be signed by a person authorised to represent the works approval holder and contains the printed name and position of that person.

Definitions

In this Licence, the terms in Table 6 have the meanings defined.

Table 6: Definitions

Term	Definition
ACN	Australian Company Number
Amendment Notice	means an amendment granted under s.59 of the EP Act in accordance with the procedure set out in s.59B of the EP Act.
Annual Period	means a 12 month period commencing from 1 June until 31 May the following year.
ACM	means bonded asbestos containing material and has the meaning defined in the Guidelines for the Assessment, Remediation and Management of Asbestos Contaminated Sites in Western Australia published by the Department of Health.
Annual Audit Compliance Report (AACR)	means a report submitted in a format approved by the CEO (relevant guidelines and templates may be available on the Department's website).
annual period	a 12 month period commencing from 1 June until 31 May the following year.
appropriately authorised facility	means a facility which holds approval under the EP Act for the acceptance of the relevant waste type as defined in the Landfill Definitions.
asbestos	means the asbestiform variety of mineral silicates belonging to the serpentine or amphibole groups of rock-forming minerals and includes actinolite, amosite, anthophyllite, chrysolite, crocidolite, tremolite and any mixture containing 2 or more of those.
clean fill	has the meaning defined in Landfill Waste Classification and Waste Definitions.
Condition	means a condition to which this Licence is subject under s.62 of the EP Act.
Books	has the same meaning given to that term under the EP Act.
CEO	means Chief Executive Officer. CEO for the purposes of notification means: Director General Department administering the <i>Environmental Protection Act 1986</i> Locked Bag 10 Joondalup DC WA 6919 info@dwer.wa.gov.au
Compliance Report	means a report in a format approved by the CEO as presented by the Licence Holder or as specified by the CEO (guidelines and templates may be available on the Department's website).

Term	Definition
Controlled Waste Regulations	Means the Environmental Protection (Controlled Waste) Regulations 2004
damp	means wet enough that dust cannot visibly be generated.
Department	means the department established under section 35 of the <i>Public Sector Management Act 1994</i> and designated as responsible for the administration of Part V, Division 3 of the EP Act.
Department Request	means a request for Books or other sources of information to be produced, made by an Inspector or the CEO to the Licence Holder in writing and sent to the Licence Holder's address for notifications, as described at the front of this Licence, in relation to: <ul style="list-style-type: none"> (a) compliance with the EP Act or this Licence; (b) the Books or other sources of information maintained in accordance with this Licence; or (c) the Books or other sources of information relating to Emissions from the Premises.
Discharge	has the same meaning given to that term under the EP Act.
DWER	Department of Water and Environmental Regulation.
Emission	has the same meaning given to that term under the EP Act.
Environmental Compliance Report	means a report to satisfy the CEO that the conditioned infrastructure has been constructed in accordance with the licence.
EP Act	means the <i>Environmental Protection Act 1986 (WA)</i> .
EP Regulations	means the <i>Environmental Protection Regulations 1987 (WA)</i> .
Green waste	means solid waste that originated from flora and which does not contain or has not been treated or coated with preserving agents, biocides, fire retardants, paint, adhesives or binders.
Inert Waste Type 1	has the meaning defined in the Landfill Definitions.
Inspector	means an inspector appointed by the CEO in accordance with s.88 of the EP Act.
Landfill Definitions	means the document titled Landfill Waste Classification and Waste Definitions 1996 published by the Department as amended from time to time.
Licence	refers to this document, which evidences the grant of a Licence by the CEO under s.57 of the EP Act, subject to the Conditions.
Licence Holder	refers to the occupier of the premises being the person to whom this Licence has been granted, as specified at the front of this Licence.

Term	Definition
non-conforming waste	means waste types that do not meet the waste acceptance requirements of condition 2.
Pollution	has the same meaning given to that term under the EP Act.
Premises	refers to the premises to which this Licence applies, as specified at the front of this Licence and as shown on the map in Schedule 1 to this Licence.
Prescribed Premises	has the same meaning given to that term under the EP Act.
Putrescible waste	has the meaning defined in Landfill Waste Classification and Waste Definitions.
Quarantined storage container	<p>means a designated storage container that is:</p> <ul style="list-style-type: none"> • clearly labelled; • separated and isolated from other waste storage and processing areas; and • designated to contain all non-conforming waste and prevent and mitigate the release to the environment of emissions that may arise from the waste.
Reportable Event	means an exceedance above the target limit specified in Column 4 of Table 6, in Schedule 3.
Suitably qualified engineer	<p>means a person who:</p> <p>(a) holds a Bachelor of Engineering recognised by the Institute of Engineers, Australia; and</p> <p>(b) has a minimum of at least five years of experience working in the area of civil engineering or is otherwise approved by the CEO to act in this capacity.</p>
Waste	has the same meaning given to that term under the EP Act.

Schedule 1: Maps

Premises map

The Premises boundary is shown in red in the map below.

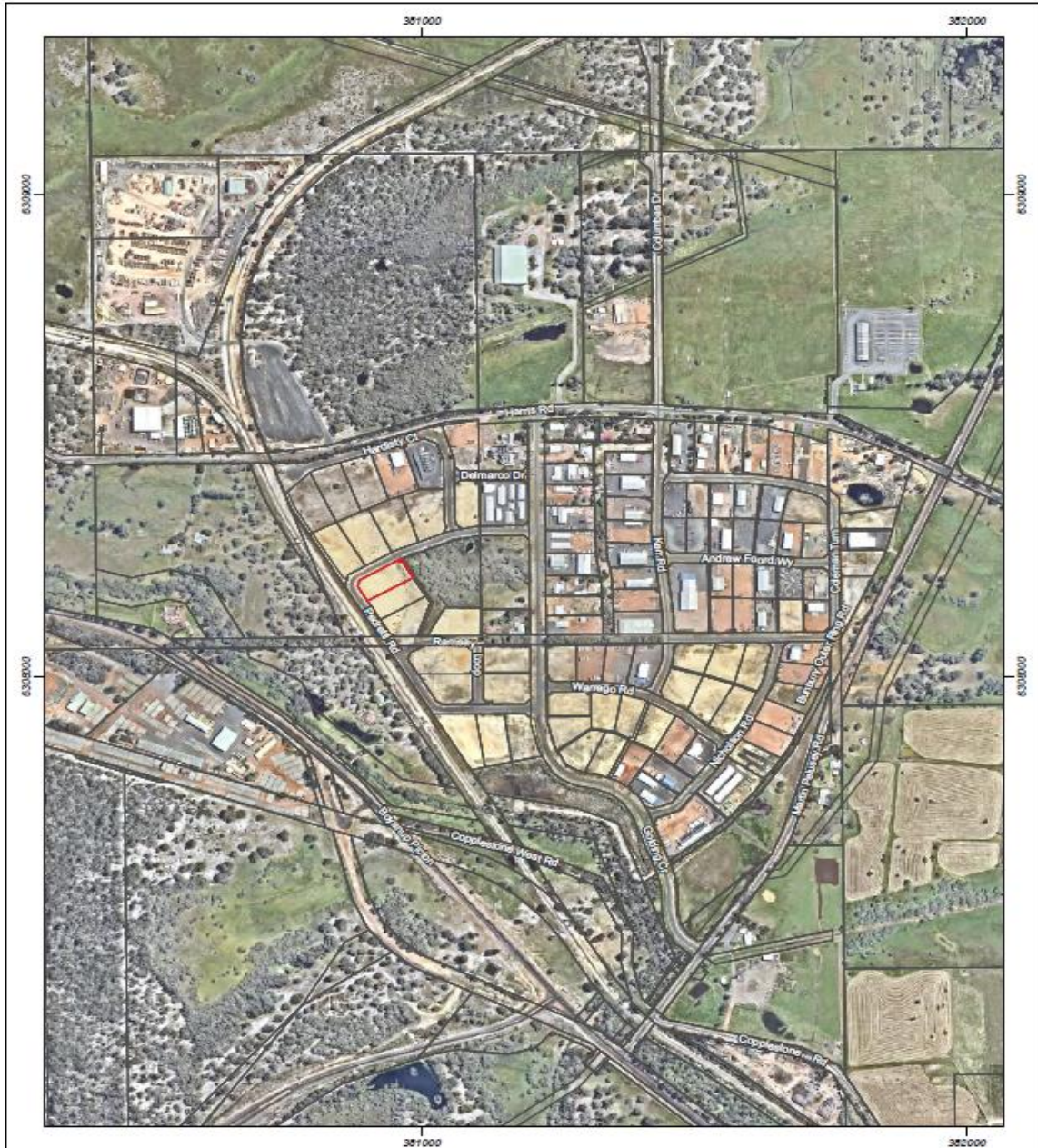
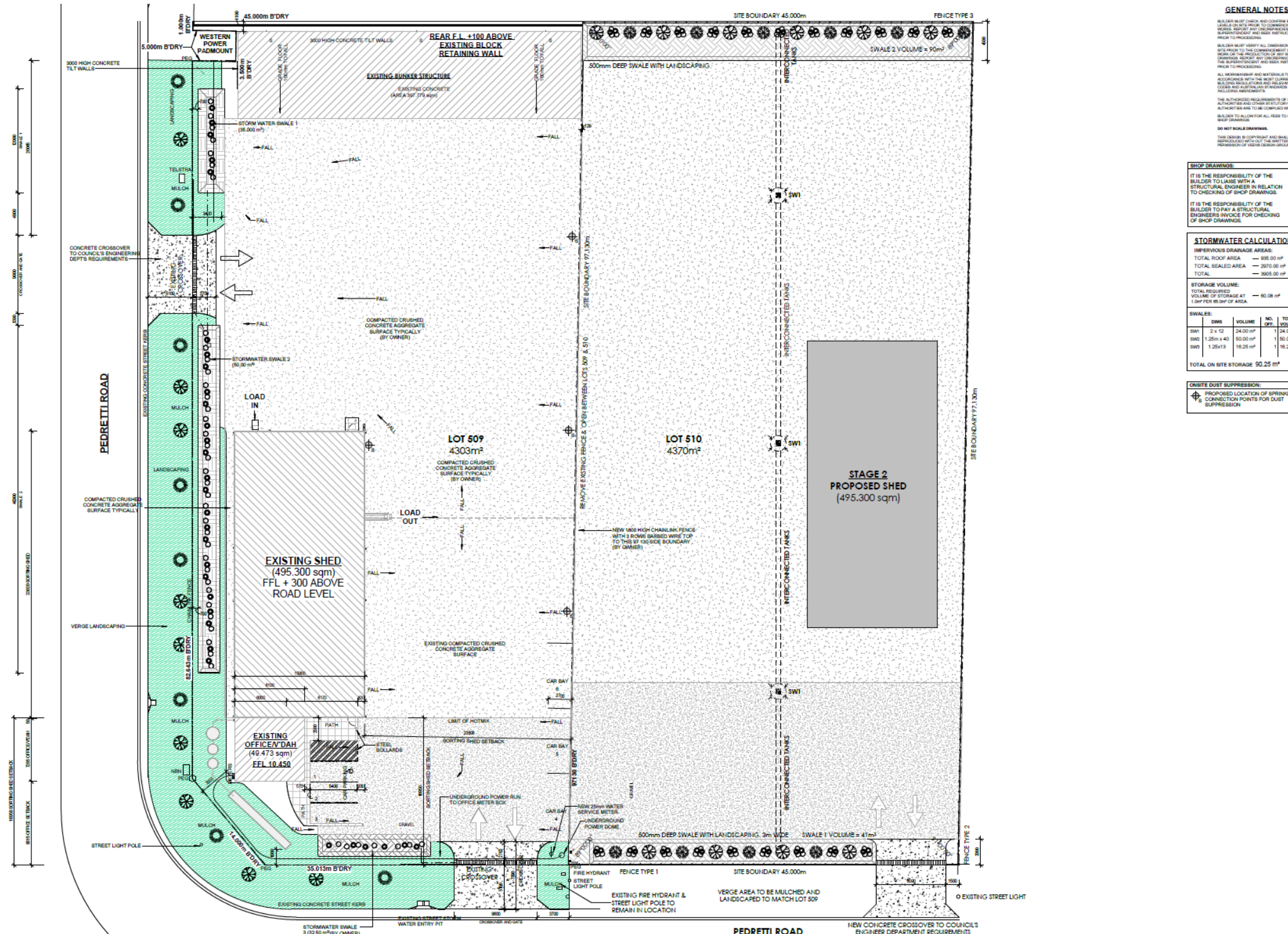


Figure 2: Prescribed premises boundary of Picton East Waste Depot



Figure 1: Premises boundary (outlined in red)



GENERAL NOTES

BUILDER MUST CHECK AND CONFIRM EXISTING LEVELS ON SITE PRIOR TO COMMENCING ANY WORK. REPORT ANY DISCREPANCIES TO THE SUPERINTENDENT AND SEEK INSTRUCTION PRIOR TO PROCEEDING.

BUILDER MUST VERIFY ALL DIMENSIONS ON SITE PRIOR TO THE COMMENCEMENT OF ANY WORK. REPORT ANY DISCREPANCIES TO THE SUPERINTENDENT AND SEEK INSTRUCTION PRIOR TO PROCEEDING.

ALL WORKMANSHIP AND MATERIALS TO BE IN ACCORDANCE WITH THE MOST CURRENT BUILDING REGULATIONS AND RELEVANT FIRE REGULATIONS INCLUDING AMENDMENTS.

THE AUTHORIZED REQUIREMENTS OF LOCAL AUTHORITIES AND OTHER STATUTORY AUTHORITIES ARE TO BE COMPLIED WITH.

BUILDER TO ALLOW FOR ALL FEES TO CHECK SHOP DRAWINGS.

DO NOT SCALE DRAWINGS.

THIS DESIGN IS COPYRIGHT AND SHALL NOT BE REPRODUCED WITHOUT THE WRITTEN PERMISSION OF VERA DESIGN GROUP.

SHOP DRAWINGS

IT IS THE RESPONSIBILITY OF THE BUILDER TO LIAISE WITH A STRUCTURAL ENGINEER IN RELATION TO CHECKING OF SHOP DRAWINGS.

IT IS THE RESPONSIBILITY OF THE BUILDER TO PAY A STRUCTURAL ENGINEER INVOICE FOR CHECKING OF SHOP DRAWINGS.

STORMWATER CALCULATION

IMPERVIOUS DRAINAGE AREAS:

TOTAL ROOF AREA	— 385.00 m ²
TOTAL SEALED AREA	— 2870.00 m ²
TOTAL	— 3255.00 m ²

STORAGE VOLUME:

TOTAL REQUIRED VOLUME OF STORAGE AT 1.0MP PER 65.0M ² OF AREA	— 60.08 m ³
--	------------------------

SWALES:

SWALE	WIDTH	VOLUME	NO. OF SWALES	TOTAL VOLUME
SW1	3 x 12	24.00 m ³	1	24.00 m ³
SW2	1.25m x 40	50.00 m ³	1	50.00 m ³
SW3	1.25x13	16.25 m ³	1	16.25 m ³

TOTAL ON SITE STORAGE 90.25 m³

ON-SITE DUST SUPPRESSION:

PROPOSED LOCATION OF SPRINKLER CONNECTION POINTS FOR DUST SUPPRESSION

Formerly - Vena Design Group | 1/24 Carey St, Bunbury 6230 | P. 08 9721 2526 | bunbury@hargreaves.design | www.hargreaves.design | find us on Facebook



No.	DESCRIPTION	DATE
A	SHORTING STATION PROPOSAL	23/10/2022
B	REVISED SHORTING STATION PROPOSAL	17/09/2023

project name:
PROPOSED PICKING STATION
LOT 509 PEDRETTI ROAD, PICTON EAST
FOR YOOKSON P/L

SITE PLAN

SD No.: 21-04272
Date: NOV 2023
Sheet number: A001
Scale: DR

BUILDER MUST CHECK AND CONFIRM EXISTING LEVELS ON SITE PRIOR TO COMMENCING ANY WORKS. REPORT ANY DISCREPANCIES TO THE SUPERINTENDENT AND SEEK INSTRUCTION PRIOR TO PROCEEDING. BUILDER MUST VERIFY ALL DIMENSIONS ON SITE PRIOR TO THE COMMENCEMENT OF ANY WORK OR THE PRODUCTION OF ANY SHOP DRAWINGS. REPORT ANY DISCREPANCIES TO THE SUPERINTENDENT AND SEEK INSTRUCTION PRIOR TO PROCEEDING. ALL WORKMANSHIP AND MATERIALS TO BE IN ACCORDANCE WITH THE MOST CURRENT BUILDING REGULATIONS AND RELEVANT N.C.C. CODES AND AUSTRALIAN STANDARDS INCLUDING AMENDMENTS. THE AUTHORIZED REQUIREMENTS OF LOCAL AUTHORITIES AND OTHER STATUTORY AUTHORITIES ARE TO BE COMPLIED WITH. ANY VARIATION FROM WHAT IS SHOWN ON THE DOCUMENTATION MAY BE FOR COMPLIANCE AND DESIGN INTEGRITY UNLESS PRIOR APPROVAL IS SOUGHT. BUILDER TO ALLOW FOR ALL FEES TO CHECK SHOP DRAWINGS. DO NOT SCALE DRAWINGS. THIS DESIGN IS COPYRIGHT AND SHALL NOT BE REPRODUCED WITHOUT THE WRITTEN PERMISSION OF VERVA DESIGN GROUP.

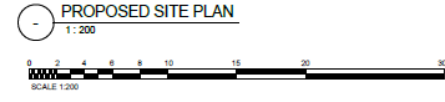
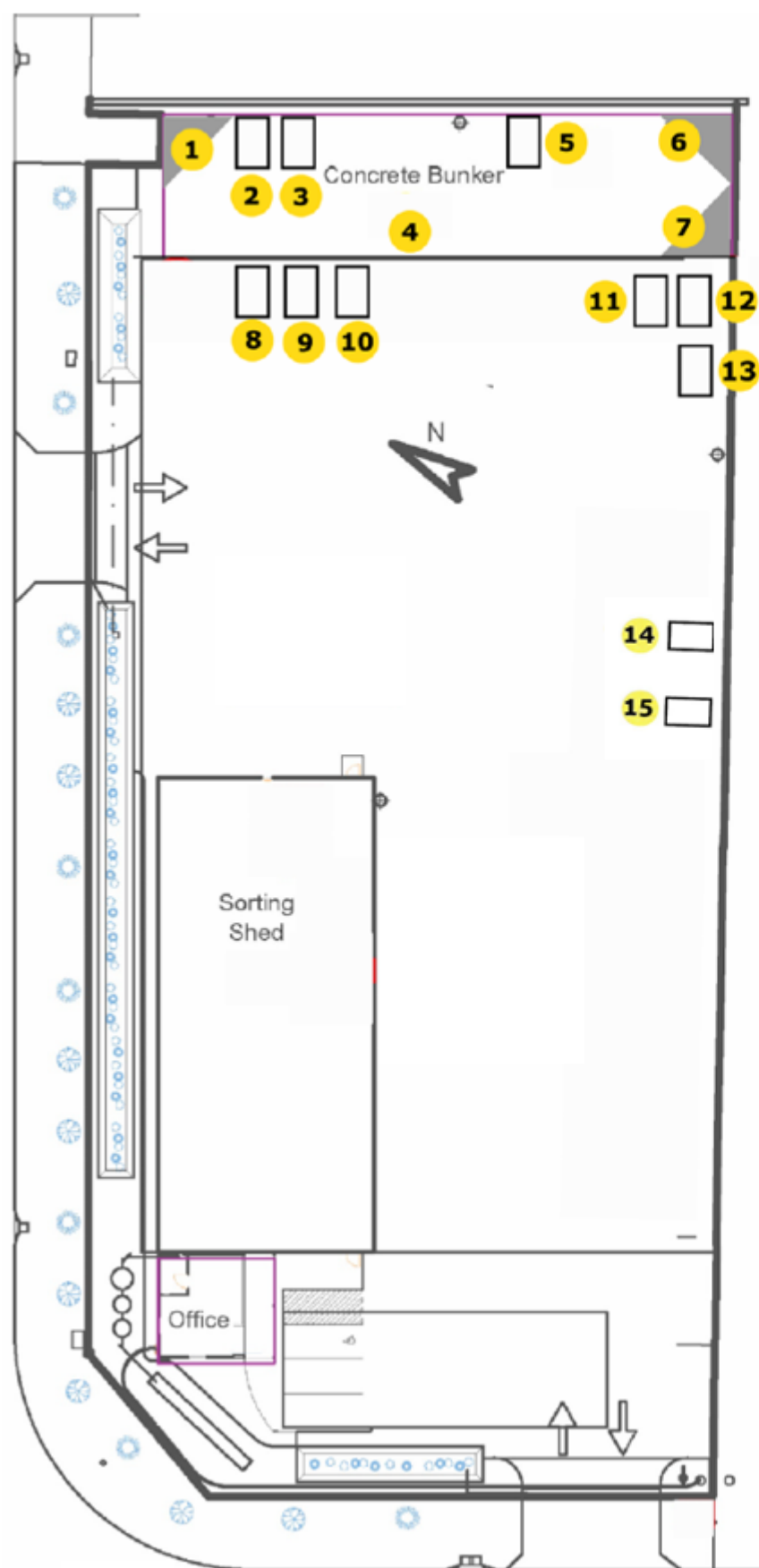


Figure 2: Site plan

Site Plan Hastie Waste Pickers Recycling Centre 22 Pedretti Road Picton East WA



Location Ref	Storage Description	Material	Volume (m³)
1	Stockpile in concrete bunker	Mulch	20
2	Hooklift bin	Metal - Steel	30
3	1100L bin	Containers for Change eligible containers	1
4	Stockpile in concrete bunker	Incoming unsorted waste	30
5	Hooklift bin	Large concrete	30
6	Stockpile in concrete bunker	Cover Material	30
7	Stockpile in concrete bunker	Road Base	20
8	Skip bin	Metal - Non-ferrous	9
9	Skip bin	Metal - Steel	9
10	Hooklift bin	Residual waste – General waste	30
11	Hooklift bin	Green waste	30
12	Hazibag	Hazibag – Asbestos	3
13	Hooklift bin	E-Waste	30
14	Skip bin	Tyres	9

Figure 3: Waste storage areas (Location 15 depicts the Designated Quarantine Storage Container)

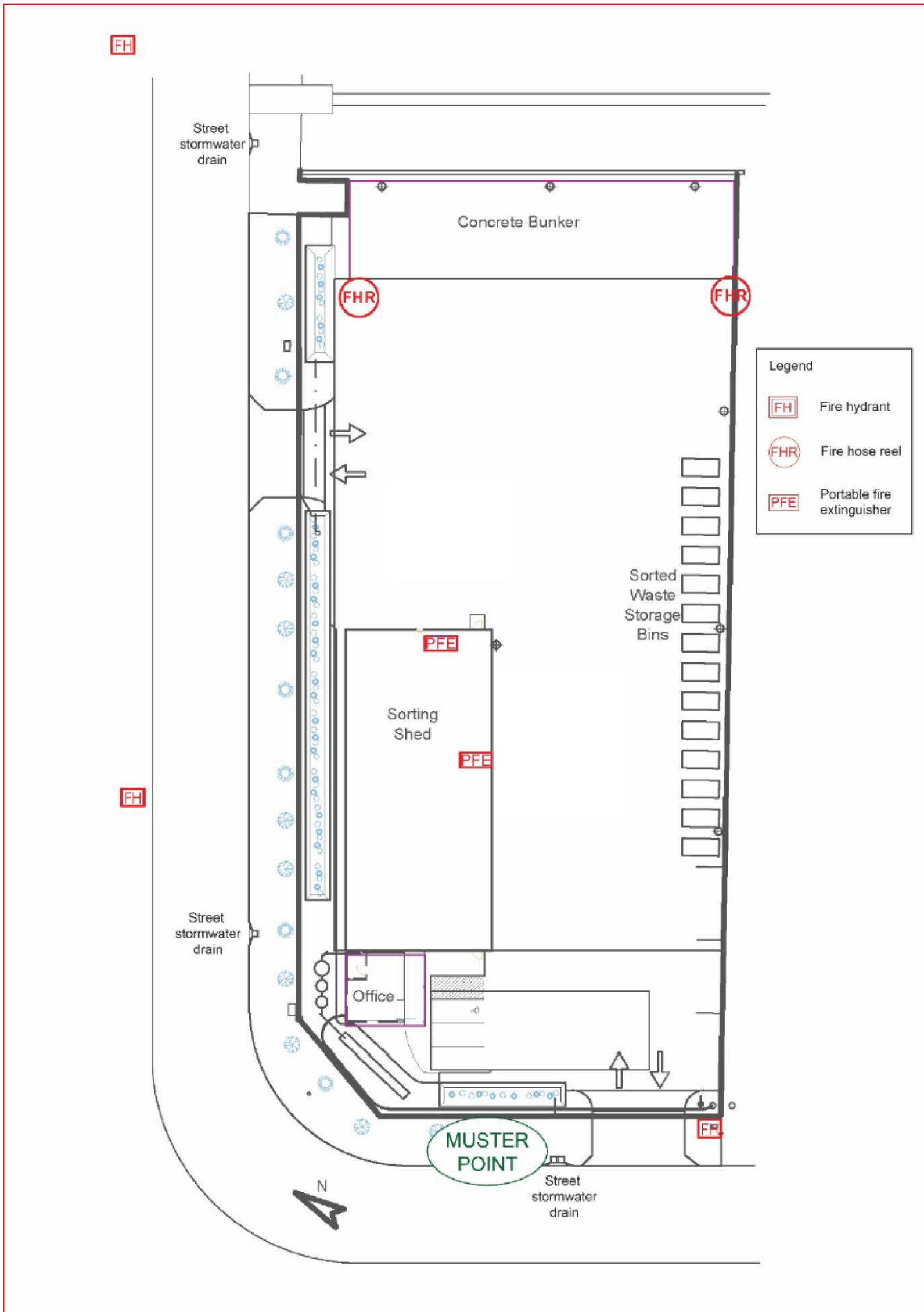


Figure 4: Location of fire safety equipment

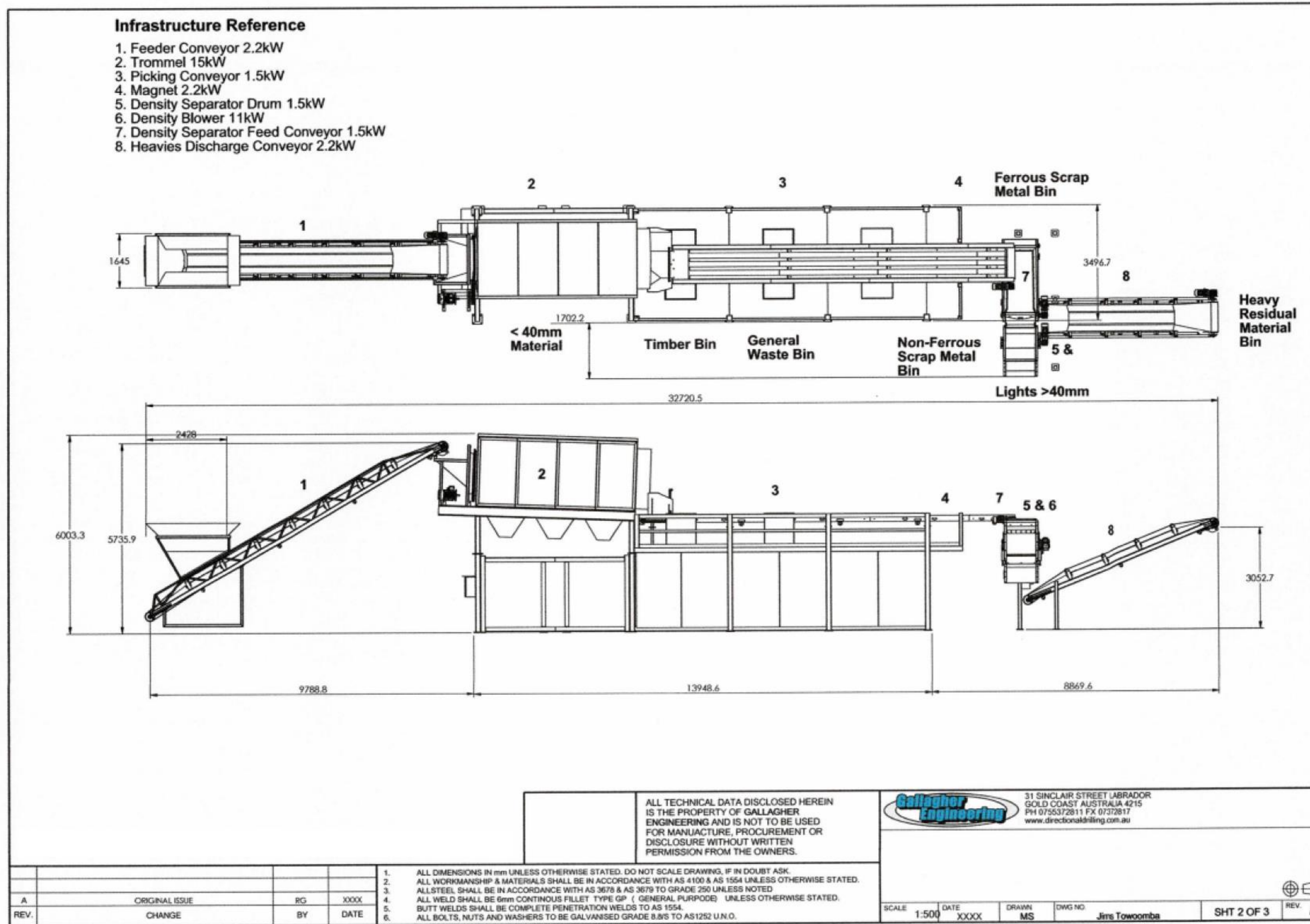
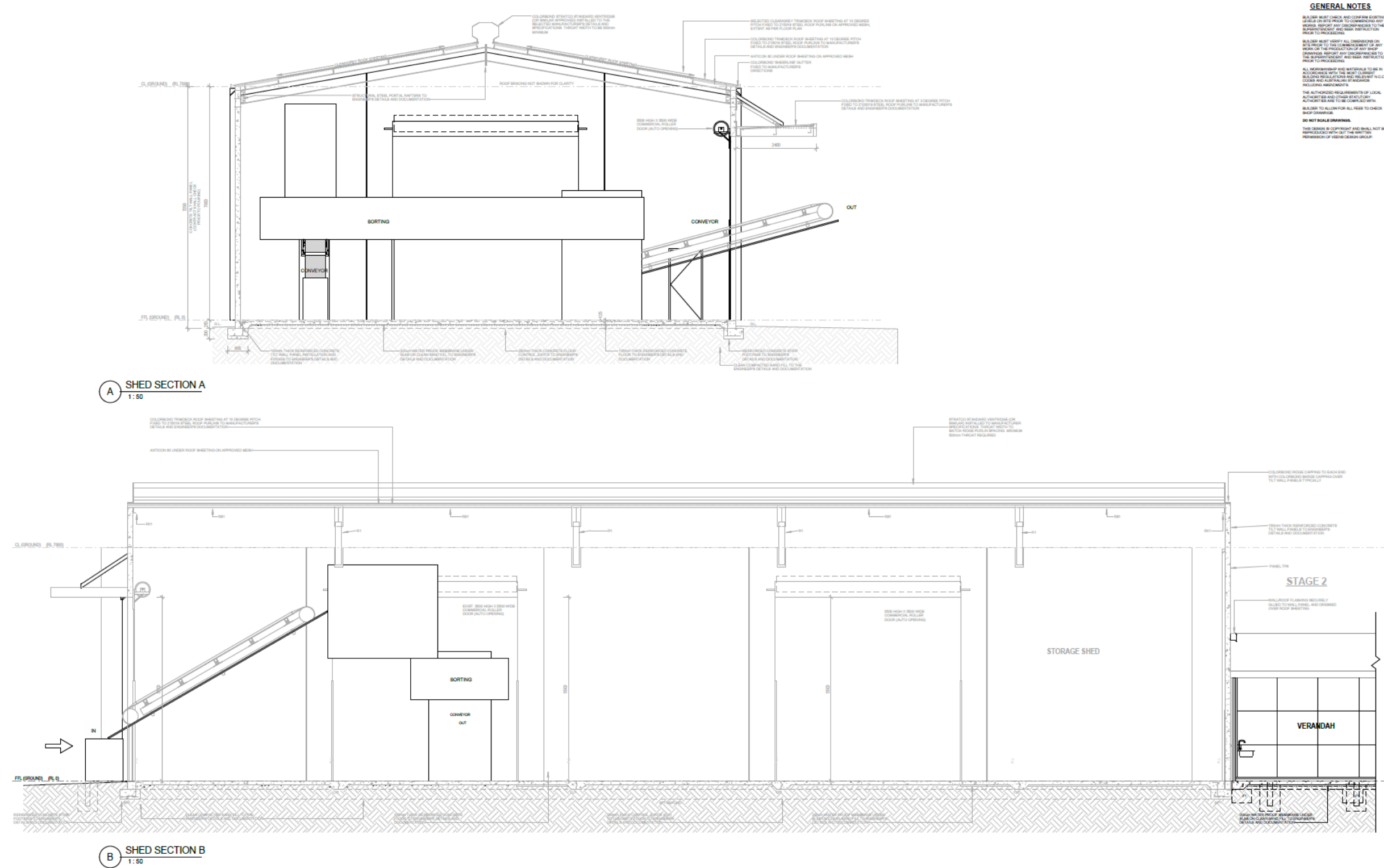


Figure 5: Infrastructure and equipment layout



GENERAL NOTES

BUILDER MUST CHECK AND CONFIRM EXISTING LEVELS ON SITE PRIOR TO COMMENCING ANY WORKS. REPORT ANY DISCREPANCIES TO THE SUPERINTENDENT AND SEEK INSTRUCTION PRIOR TO PROCEEDING.

BUILDER MUST VERIFY ALL DIMENSIONS ON SITE PRIOR TO THE COMMENCEMENT OF ANY WORKS. REPORT ANY DISCREPANCIES TO THE SUPERINTENDENT AND SEEK INSTRUCTION PRIOR TO PROCEEDING.

ALL WORKMANSHIP AND MATERIALS TO BE IN ACCORDANCE WITH THE MOST CURRENT BUILDING REGULATIONS AND RELEVANT N.C.C. CODES AND AUSTRALIAN STANDARDS INCLUDING AMENDMENTS.

THE AUTHORIZED REQUIREMENTS OF LOCAL AUTHORITIES AND CODES INCLUDING BUT NOT LIMITED TO: LOCAL GOVERNMENT AND STATE INSTRUCTIONS.

BUILDER TO ALLOW FOR ALL FEES TO CHECK SHOP DRAWINGS.

DO NOT SCALE DRAWINGS.

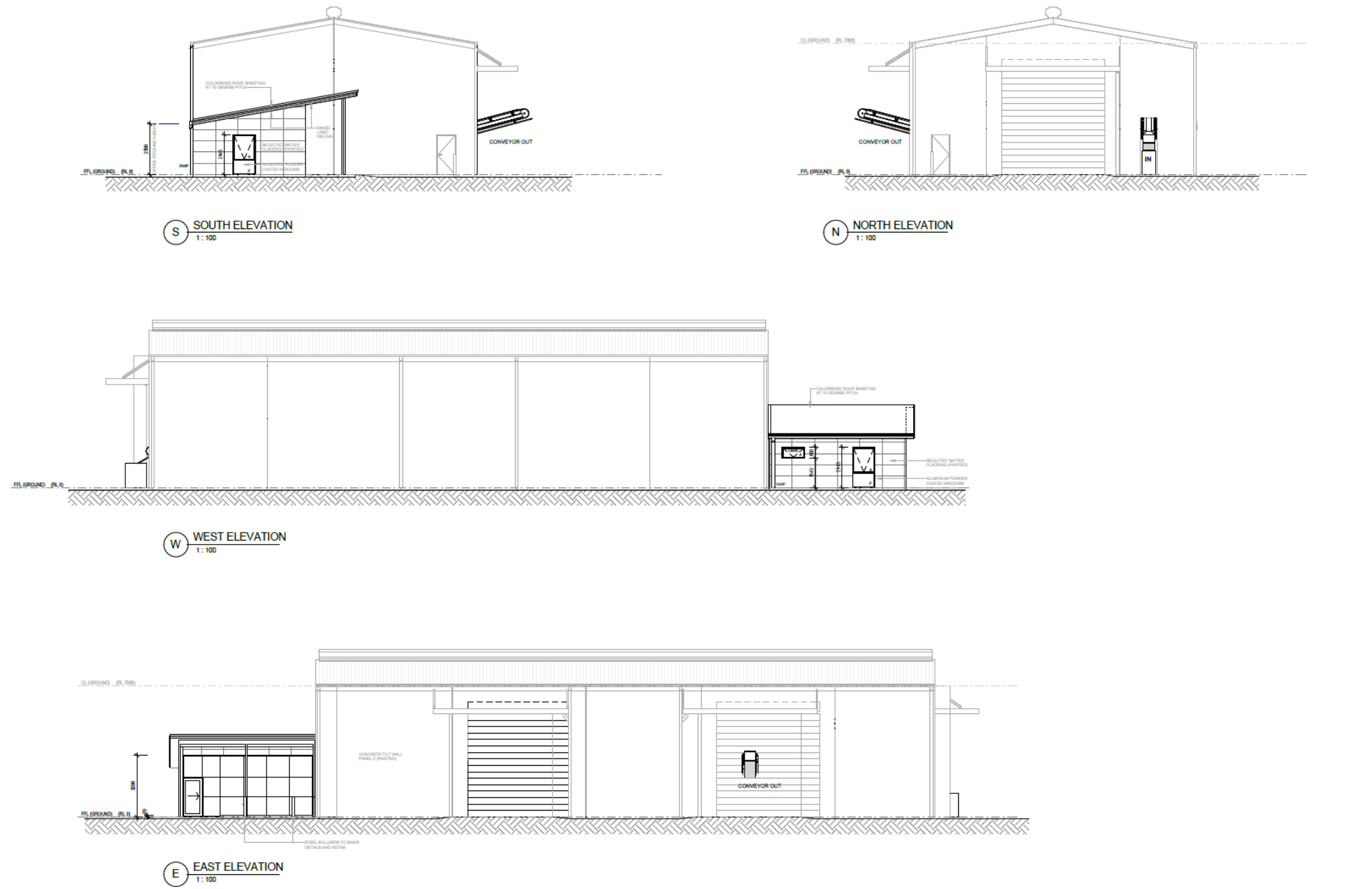
THIS DESIGN IS COPYRIGHT AND SHALL NOT BE REPRODUCED WITH OUT THE WRITTEN PERMISSION OF HARGREAVES DESIGN GROUP.

			Formerly - Veens Design Group 1/24 Corey St, Bunbury 6230 P. 08 9721 2534 bunbury@hargreaves.design www.hargreaves.design find us on Facebook		
No.	DESCRIPTION	DATE	project name: PROPOSED PICKING STATION LOT 509 PEDRETTI ROAD, PICTON EAST FOR YOOKSON P/L		
A	SORTING STATION PROPOSAL	22/11/2019	SHED SECTIONS		
B	REVISED SORTING STATION PROPOSAL	17/02/2020	SHEET NUMBER A004		
			DRAWN: DB CHECKED: MP		
			SCALE: 1:50 ON A1 SHEET		

BUILDER MUST CHECK AND CONFIRM EXISTING LEVELS ON SITE PRIOR TO COMMENCING ANY WORKS. REPORT ANY DISCREPANCIES TO THE SUPERINTENDENT AND SEEK INSTRUCTION PRIOR TO PROCEEDING. BUILDER MUST VERIFY ALL DIMENSIONS ON SITE PRIOR TO THE COMMENCEMENT OF ANY WORKS OR THE PRODUCTION OF ANY SHOP DRAWINGS. REPORT ANY DISCREPANCIES TO THE SUPERINTENDENT AND SEEK INSTRUCTION PRIOR TO PROCEEDING. ALL WORKMANSHIP AND MATERIALS TO BE IN ACCORDANCE WITH THE MOST CURRENT BUILDING REGULATIONS AND RELEVANT N.C.C. CODES AND AUSTRALIAN STANDARDS INCLUDING AMENDMENTS. THE AUTHORIZED REQUIREMENTS OF LOCAL AUTHORITIES AND OTHER STATUTORY AUTHORITIES ARE TO BE COMPLIED WITH. ANY VARIATION FROM WHAT IS SHOWN ON THE DOCUMENTATION MAY JEOPARDISE COMPLIANCE AND DESIGN INTEGRITY UNLESS PRIOR APPROVAL IS SOUGHT. BUILDER TO ALLOW FOR ALL FEES TO CHECK SHOP DRAWINGS. DO NOT SCALE DRAWINGS. THIS DESIGN IS COPYRIGHT AND SHALL NOT BE REPRODUCED WITH OUT THE WRITTEN PERMISSION OF HARGREAVES DESIGN GROUP.



Figure 6: Shed section plans showing installation location of sorting equipment



GENERAL NOTES

BUILDER MUST CHECK AND CONFIRM EXISTING LEVELS ON SITE PRIOR TO COMMENCING ANY WORK. REPORT ANY DISCREPANCIES TO THE SUPERINTENDENT AND SEEK INSTRUCTION PRIOR TO PROCEEDING.

BUILDER MUST VERIFY ALL DIMENSIONS ON SITE PRIOR TO THE COMMENCEMENT OF ANY WORK OR THE PRODUCTION OF ANY SHOP DRAWINGS. REPORT ANY DISCREPANCIES TO THE SUPERINTENDENT AND SEEK INSTRUCTION PRIOR TO PROCEEDING.

ALL WORKMANSHIP AND MATERIALS TO BE IN ACCORDANCE WITH THE MOST CURRENT BUILDING REGULATIONS AND RELEVANT N.C.C. CODES AND AUSTRALIAN STANDARDS INCLUDING AMENDMENTS.

THE AUTHORIZED REQUIREMENTS OF LOCAL AUTHORITIES AND OTHER STATUTORY AUTHORITIES ARE TO BE COMPLIED WITH.

BUILDER TO ALLOW FOR ALL FEES TO CHECK SHOP DRAWINGS.

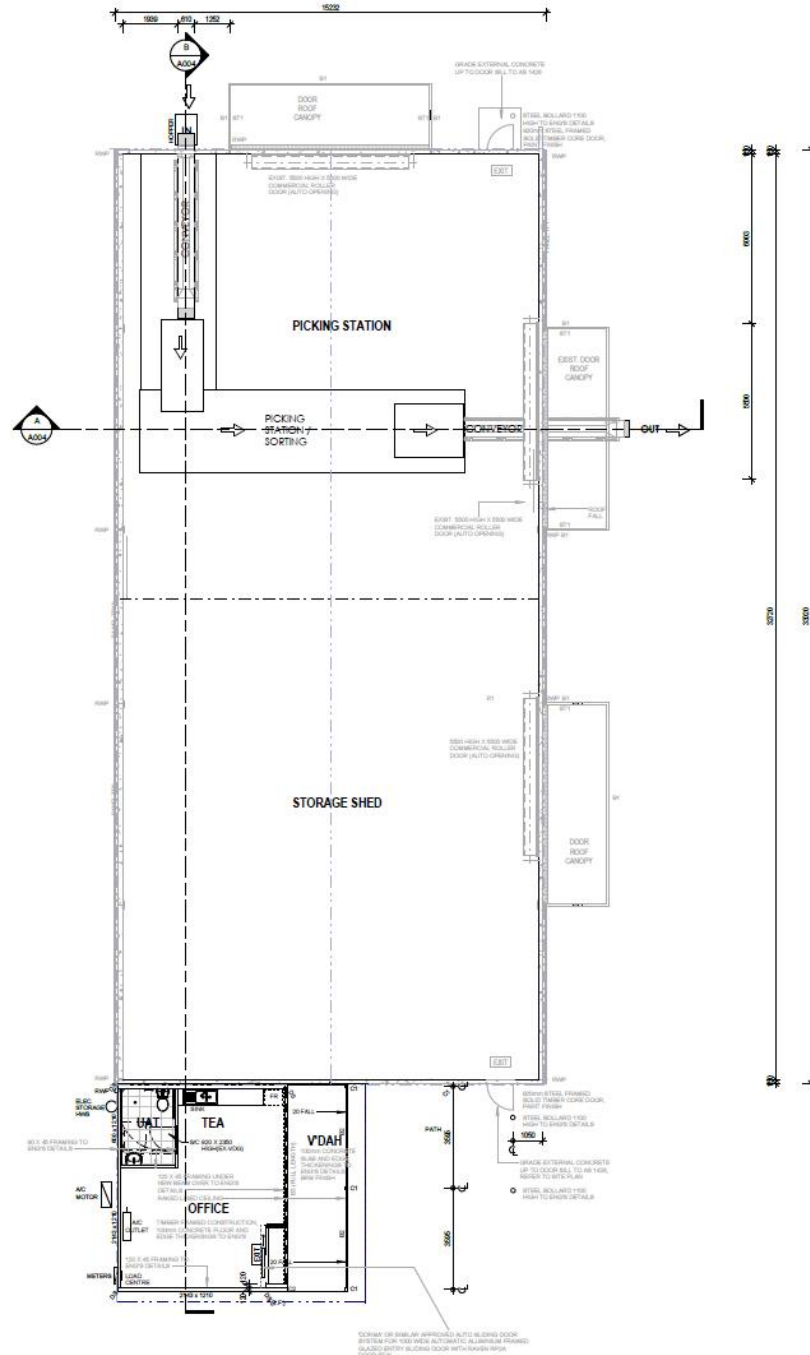
DO NOT SCALE DRAWINGS.

THIS DESIGN IS COPYRIGHT AND SHALL NOT BE REPRODUCED WITHOUT THE WRITTEN PERMISSION OF HARGREAVES DESIGN GROUP.

			Formerly - Veens Design Group 1/26 Carey St, Bunbury 6230 P. 08 9721 2524 bunbury@hargreaves.design www.hargreaves.design find us on Facebook		
No.	DESCRIPTION	DATE	project name: PROPOSED PICKING STATION LOT 509 PEDRETTI ROAD, PICTON EAST FOR YOKSON P/L		
A	SKIRTING STATION PROPOSAL	22/11/2022	ELEVATIONS job no.: 21-04721 date: NOV 2022 current revision: sheet number: A003 checked: DB checked: MF scale: 1:100 ON A1 SHEET		
B	REVISED SKIRTING STATION PROPOSAL	17/02/2023			



Figure 7: Shed elevation plans



SHOP DRAWINGS:
 IT IS THE RESPONSIBILITY OF THE BUILDER TO LAISE WITH A STRUCTURAL ENGINEER IN RELATION TO CHECKING OF SHOP DRAWINGS.
 IT IS THE RESPONSIBILITY OF THE BUILDER TO PAY A STRUCTURAL ENGINEERS INVOICE FOR CHECKING OF SHOP DRAWINGS.

STRUCTURAL LEGEND:

C1 - 100 x 100 x 3 SHS
C2 - 80 x 80 x 3.5 SHS
R1 - 400x60 RAFTERS
R2 - 200 x 42 LVL SLATERS AT 600 CTS
RK1 - 180 PFC RAZERS
RK2 - 90 x 90 x 4.5 CA OR 75 x 75 x 4 EA
ROOF BRACE
B1 - 250 PFC BEAM
B2 - 240 x 45 MUP/O BEAM
B3 - 250 PFC BEAM
S1 - 80 x 80 x 5 SHS STRUTS
S2 - DOUBLE STUD BUILT INTO FRAME

GENERAL NOTES

BUILDER MUST CHECK AND CONFIRM EXISTING LEVELS ON SITE PRIOR TO COMMENCING ANY WORKS. REPORT ANY DISCREPANCIES TO THE SUPERINTENDENT AND SEEK INSTRUCTION PRIOR TO PROCEEDING.

BUILDER MUST VERIFY ALL DIMENSIONS ON SITE PRIOR TO THE COMMENCEMENT OF ANY WORK OR THE PRODUCTION OF ANY SHOP DRAWINGS. REPORT ANY DISCREPANCIES TO THE SUPERINTENDENT AND SEEK INSTRUCTION PRIOR TO PROCEEDING.

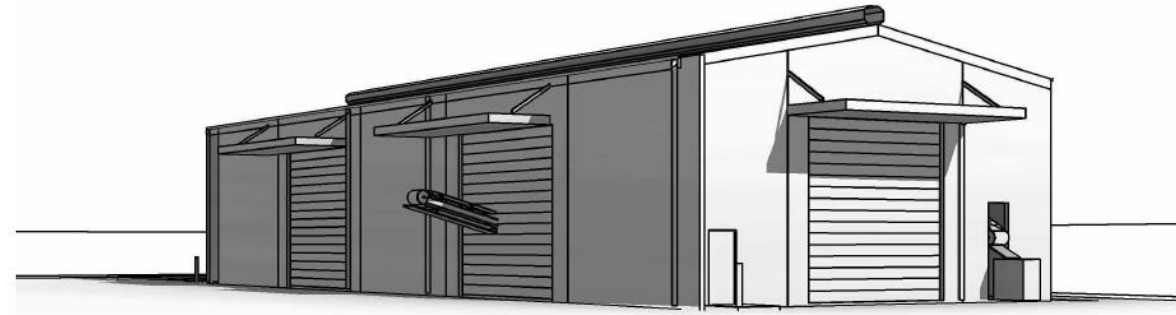
ALL WORKMANSHIP AND MATERIALS TO BE IN ACCORDANCE WITH THE MOST CURRENT BUILDING REGULATIONS AND RELEVANT A.C.C. CODES AND AUSTRALIAN STANDARDS INCLUDING AMENDMENTS.

THE AUTHORIZED REQUIREMENTS OF LOCAL AUTHORITIES AND OTHER STATUTORY AUTHORITIES ARE TO BE COMPLIED WITH.

BUILDER TO ALLOW FOR ALL FEES TO CHECK SHOP DRAWINGS.

DO NOT SCALE DRAWINGS.

THIS DESIGN IS COPYRIGHT AND SHALL NOT BE REPRODUCED WITH OUT THE WRITTEN PERMISSION OF HARGREAVES DESIGN GROUP.



<p>Formerly - Veens Design Group 1/24 Carey St, Bunbury 6230 P. 08 9721 2526 bunbury@hargreaves.design www.hargreaves.design Find us on Facebook</p> <p>HARGREAVES DESIGN GROUP</p>			<p>PROPOSED FLOOR PLAN 1:100</p>											
<p>revision table</p> <table border="1"> <thead> <tr> <th>No.</th> <th>DESCRIPTION</th> <th>DATE</th> </tr> </thead> <tbody> <tr> <td>A</td> <td>Sortng Station Proposal</td> <td>22/11/2019</td> </tr> <tr> <td>B</td> <td>Revised Sortng Station Proposal</td> <td>17/09/2020</td> </tr> </tbody> </table>			No.	DESCRIPTION	DATE	A	Sortng Station Proposal	22/11/2019	B	Revised Sortng Station Proposal	17/09/2020	<p>project name: PROPOSED PICKING STATION LOT 509 PEDRETTI ROAD, PICTON EAST FOR YOOKSON P/L</p>		
No.	DESCRIPTION	DATE												
A	Sortng Station Proposal	22/11/2019												
B	Revised Sortng Station Proposal	17/09/2020												
<p>revision table</p> <table border="1"> <thead> <tr> <th>Checked</th> <th>By</th> <th>Date</th> </tr> </thead> <tbody> <tr> <td>MF</td> <td>DB</td> <td>B</td> </tr> </tbody> </table>			Checked	By	Date	MF	DB	B	<p>FLOOR PLAN</p> <table border="1"> <tr> <td>sheet number</td> <td>A002</td> </tr> <tr> <td>scale</td> <td>1:100 OR AT SHEET</td> </tr> </table>		sheet number	A002	scale	1:100 OR AT SHEET
Checked	By	Date												
MF	DB	B												
sheet number	A002													
scale	1:100 OR AT SHEET													
<p><small>BUILDER MUST CHECK AND CONFIRM EXISTING LEVELS ON SITE PRIOR TO COMMENCING ANY WORKS. REPORT ANY DISCREPANCIES TO THE SUPERINTENDENT AND SEEK INSTRUCTION PRIOR TO PROCEEDING. BUILDER MUST VERIFY ALL DIMENSIONS ON SITE PRIOR TO THE COMMENCEMENT OF ANY WORK OR THE PRODUCTION OF ANY SHOP DRAWINGS. REPORT ANY DISCREPANCIES TO THE SUPERINTENDENT AND SEEK INSTRUCTION PRIOR TO PROCEEDING. ALL WORKMANSHIP AND MATERIALS TO BE IN ACCORDANCE WITH THE MOST CURRENT BUILDING REGULATIONS AND RELEVANT A.C.C. CODES AND AUSTRALIAN STANDARDS INCLUDING AMENDMENTS. THE AUTHORIZED REQUIREMENTS OF LOCAL AUTHORITIES AND OTHER STATUTORY AUTHORITIES ARE TO BE COMPLIED WITH. ANY VARIATION FROM WHAT IS SHOWN ON THE DOCUMENTATION MAY JEOPARDISE COMPLIANCE AND DESIGN INTEGRITY UNLESS PRIOR APPROVAL IS SOUGHT. BUILDER TO ALLOW FOR ALL FEES TO CHECK SHOP DRAWINGS. DO NOT SCALE DRAWINGS. THIS DESIGN IS COPYRIGHT AND SHALL NOT BE REPRODUCED WITH OUT THE WRITTEN PERMISSION OF HARGREAVES DESIGN GROUP.</small></p>														

Figure 8: Floor plan showing sorting equipment installation location in the existing shed

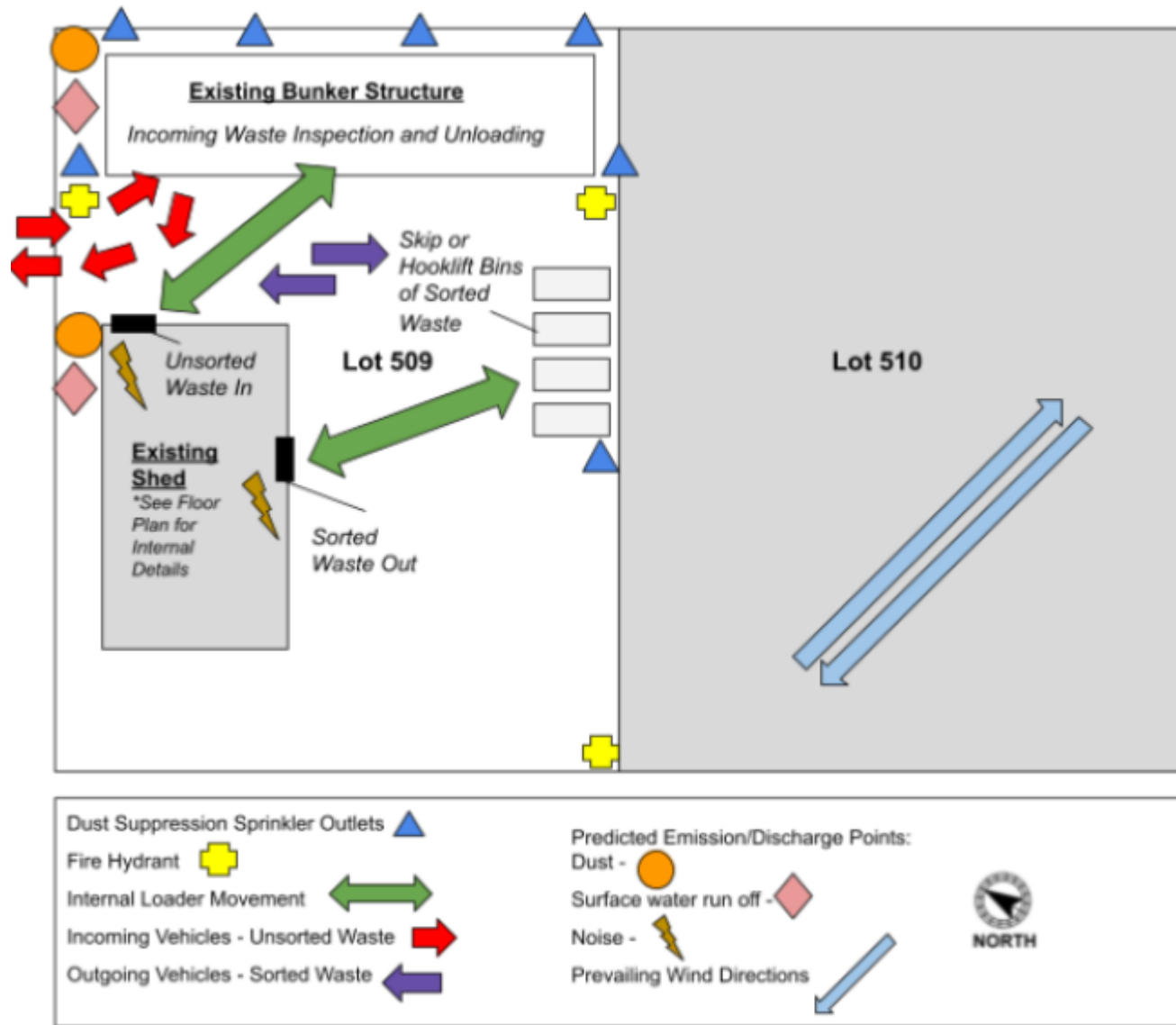


Figure 9: Site map of dust suppression equipment